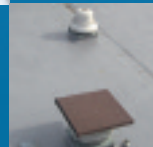




[www.seamlesscoatings.co.uk](http://www.seamlesscoatings.co.uk)

# FIBRETEX

FLAT ROOF PROTECTION



Easy to apply, simple to use –  
Fibretex roof coatings for asphalt,  
felt, metal and asbestos roofs  
from Seamless Coatings

# Fibretext High Build from Seamless Coatings

## The simple answer to instant, waterproof protection for flat roofs

All SCL roof coatings are manufactured and tested to exacting standards, to ensure you achieve the right result, first time, every time. Our coatings have been specifically designed to provide an easy to apply, continuous film, with no seams, leaving all coated areas waterproof and protected for years to come.

## Easy to apply – straight from the can

No mixing, no fuss, just open the can and away you go...

- Fibretext High Build is ready for use
- Gives instant waterproof protection
- Offers unbeatable adhesion and durability
- Ideal for complete roof application or patch repairs

Fibretext High Build from SCL uses the latest solvent technology to give every application long-term waterproof protection.



# Fibretext protection in 4 easy ways

## **Fibretext High Build**

Fibre reinforced coating to fill small gaps and cracks.

Cold applied – no hot works.

## **Fibretext Smooth**

Produces a smooth finish.

Stable finish with extra binding power to fill cracks and gaps.

Cold applied – no hot works.

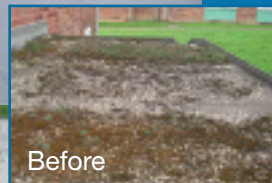
## **Primer (for porous surfaces)**

Effective universal primer for damaged/porous surfaces.

Deep penetration offering extra stability and binding power.

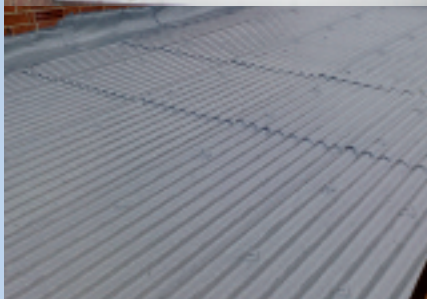
## **Aggregate Finish**

Anti slip finish for walkways on all types of flat roofs.



Before

After



A perfect finish for  
all your flat roofs

# Fibretext, a solvent based acrylic roof coating from Seamless Coatings

Fibretext High Build and Fibretext Smooth offer the simplest answer to waterproofing most types of roof surfaces including:

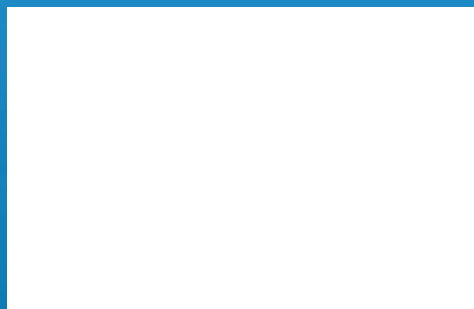
- Asphalt and felt flat roofs
- Metal and asbestos cement pitched roofs

Fibretext High Build has added fibres that interface with the roofing material to cover small gaps and cracks, whilst Fibretext Smooth, gives a smooth, long term protection to your flat roof covering.

## **Fibretext High Build and Fibretext Smooth benefits include:**

- Roller or brush applied, No Hot Works
- Standard colours available: Grey/White  
Non standard colours available upon request (minimum order required)
- Easy to apply and detail
- Can be applied over most roof types
- Available in 5kg tins or 20kg drums
- Joint free
- Resistance to ponded water
- Easy to maintain

## **Local distributor:**



## **Seamless Coatings**

A division of IMG Composite Ltd

Unit 18 Oak Street Industrial Estate  
Cradley Heath, West Midlands B64 5JY

**Office:** 01384 413815 **Fax:** 01384 413830

[www.seamlesscoatings.co.uk](http://www.seamlesscoatings.co.uk)

Design copyright of Seamless Coatings